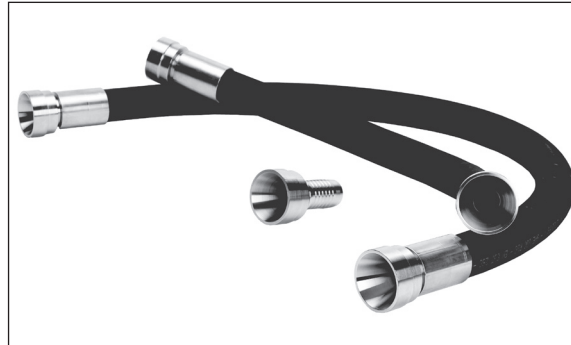


1" high-pressure hose

1. Introduction

The function of hoses with Victaulic® ends is to connect the APP pumps with the rest of the system in a flexible and noise-reducing way.



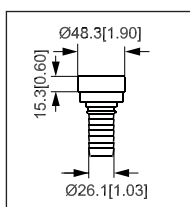
2. Features

The hose assembly is produced with a nitrile rubber high-pressure hose, highly flexible, with 1½" Victaulic ends made of Duplex stainless steel.

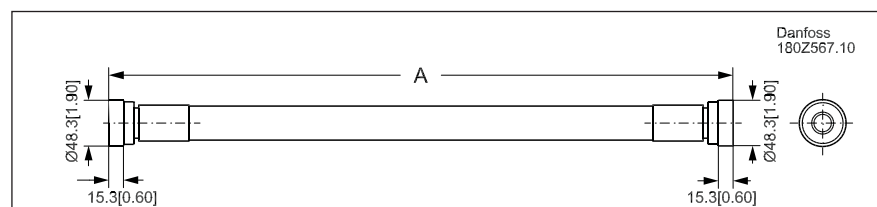
3. Technical data

Hose	EN 857 2SC - SAE 100 R16 (Flexopack2)	
Inner diameter	25.4 mm	1"
Outer diameter	35.6 mm	1.4"
Materials	NBR (synthetic rubber)	
UV resistant	Limited lifetime	
Max. working pressure	185 bar	2700 psi
Min. bend radius	152 mm	6.08 inches
Standpipe (connection)		
Size	1½" Victaulic	
Materials	Duplex EN1.4462	
Hose with Victaulic ends		
Length (A)	0.66 m	26.0 inches
	1.16 m	45.7 inches
Pressure rating	80 bar	1160 psi
Temperature	-40 to +100°C	-40 to +212°F

Standpipe



Hose



4. Code numbers

Item	Code number
Hose - 0.66 m (26 inches); max. 90° bending	180Z0228
Hose - 1.16 m (45.66 inches); max. 180° bending	180Z0229
Standpipe* (1½" Victaulic®)	180Z0039
Crimping ferrules* (12 pcs.; AISI 316)	180Z0056

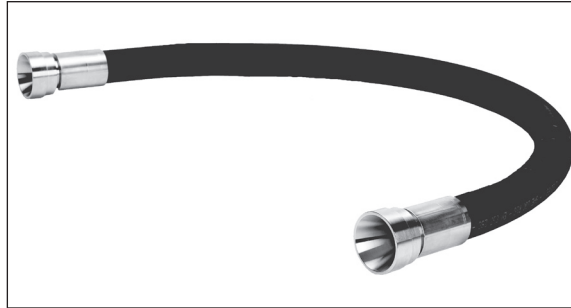
Victaulic® is a registered trademark of Victaulic Corporation Inc.

*: Part of 180Z0228 and 180Z0229 - also available as component for user-manufactured hoses.

2" high-pressure hose

1. Introduction

The function of hoses with Victaulic® ends is to connect the APP pumps with the rest of the system in a flexible and noise-reducing way.



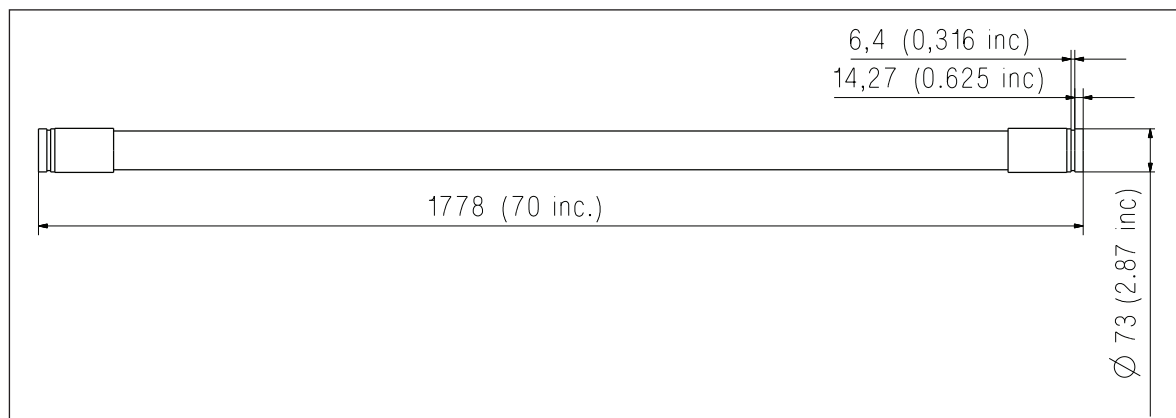
2. Features

The hose assembly is produced with a nitrile rubber high-pressure hose, highly flexible, with 2½" Victaulic ends (OD 73 mm) made of Duplex stainless steel.

3. Technical data

Hose	EN 857 2SC - SAE 100 R2 2SN	
Inner diameter	50 mm	2"
Outer diameter	67.3 mm	2.65"
Materials	NBR (synthetic rubber)	
UV resistant	Limited lifetime	
Max. working pressure	80 bar	1160 psi
Min. bend radius	630 mm	24.8 inches
Standpipe (connection)		
Size	2½" Victaulic (OD 73 mm)	
Materials	Duplex EN1.4462	
Hose with Victaulic ends		
Length (A)	1.78 m	70 inches
Pressure rating	80 bar	1160 psi
Temperature	-40 to +100°C	-40 to +212°F

Hose



4. Code numbers

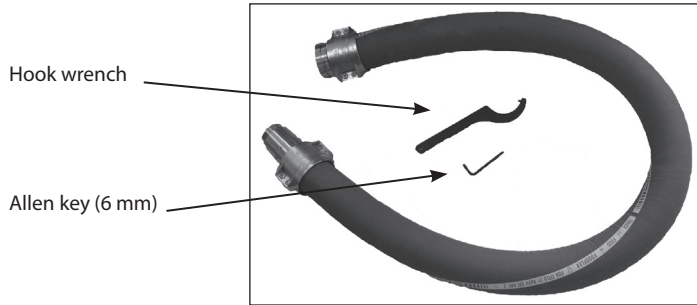
Item	Code number
Hose - 1778 mm (70 inches); max. 180° bending	180Z0263

Victaulic® is a registered trademark of Victaulic Corporation Inc.

3" low-pressure hose kit

1. Introduction

The function of hoses with Victaulic® ends is to connect the APP pumps with the rest of the system in a flexible and noise-reducing way.



2. Features

The hose assembly is produced with a chloridebutyl rubber low-pressure hose, highly flexible, with 3" Victaulic ends made of Duplex stainless steel. The Allen key is used for assembling the hose clamps and the hook wrench is used for mounting the hosetail with M60 connection onto the APP pump.

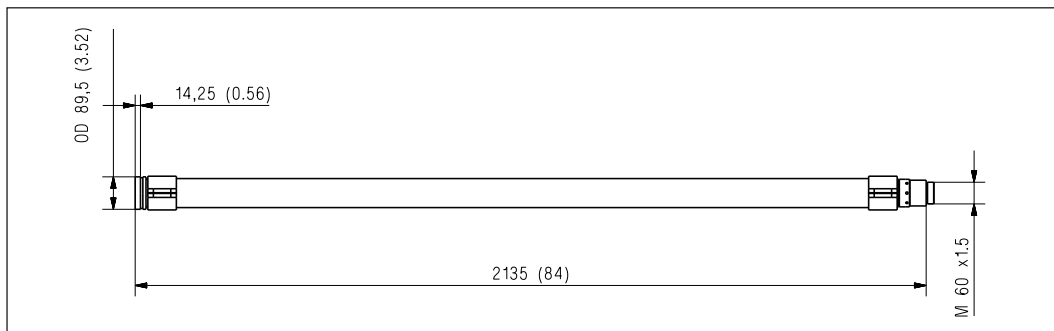
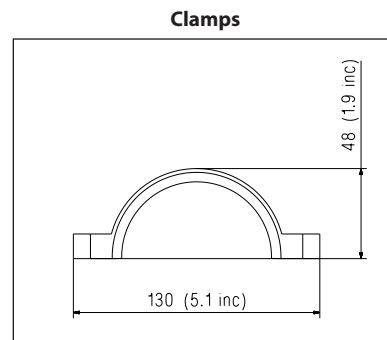
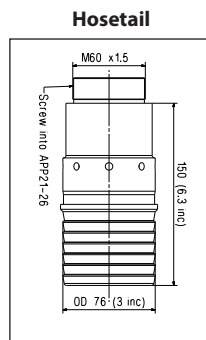
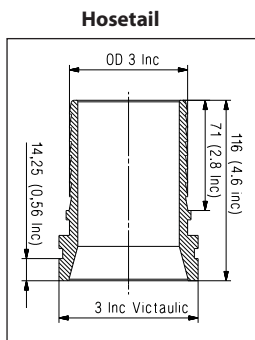
The hose clamps secure the hose/hosetail connection and prevent the hose from being torn off the hosetails.

The hose can be reduced to fit the length required as long as the minimum bend radius is observed. The longer the hose is the more pulsation dampening effect it has.

3. Technical data

Hose	FDA Title21 - item 177.2600 and BGA XXI Cat. 2	
Inner diameter	76.2 mm	3"
Outer diameter	89.5 mm	3.52"
Materials	Chloridebutyl rubber (IIR)	
UV resistant	Limited lifetime	
Max. working pressure	6 bar	87 psi
Min. bend radius	170 mm	6.7 inches

Hosetails (connections)		
Size	3" Victaulic / 3"	
	3" / M60	
Materials	Duplex EN1.4462	
Hose with Victaulic ends		
Length (A)	2.135 m	84 inches
Pressure rating	6 bar	87 psi
Temperature	0 to +50°C	32 to +122°F



Hose kit (assembled)

4. Code numbers

Item	Code number
Low-pressure hose kit	180Z0277

Victaulic® is a registered trademark of Victaulic Corporation Inc.